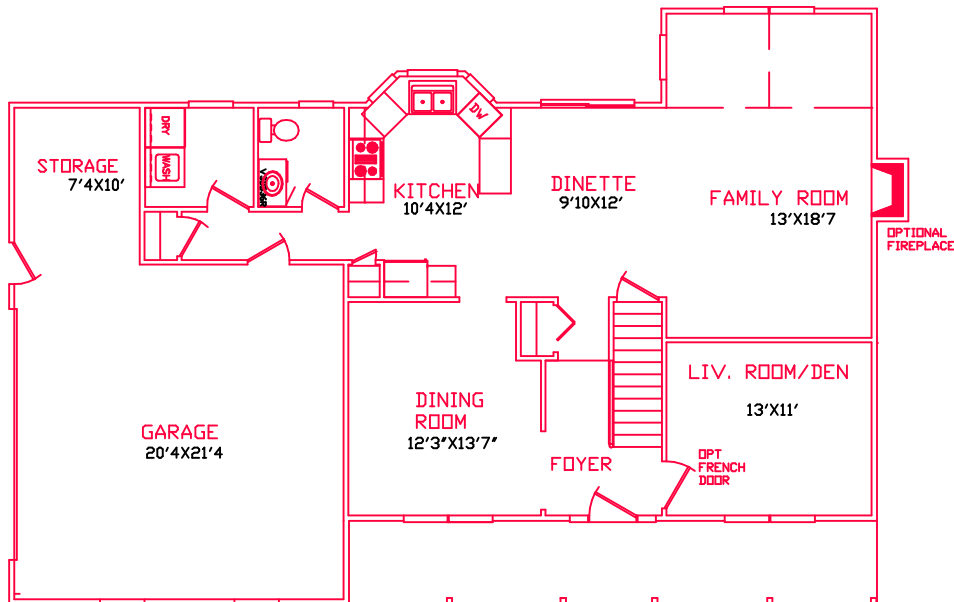
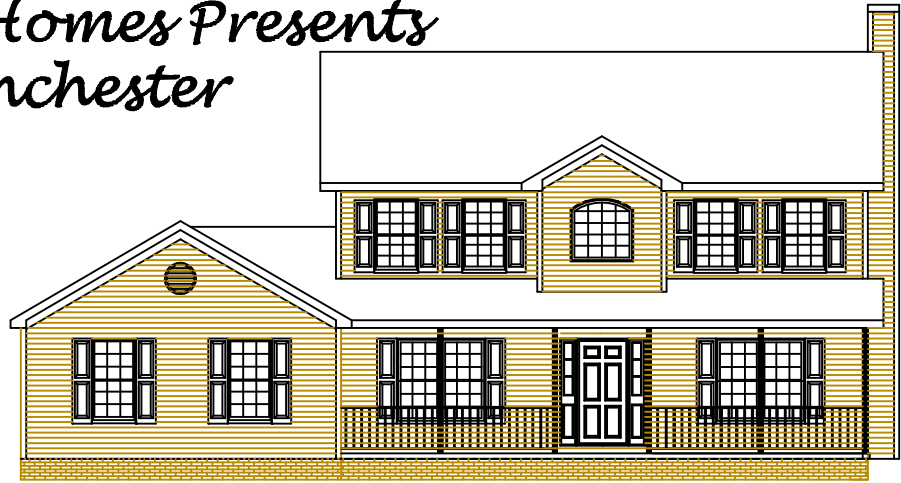
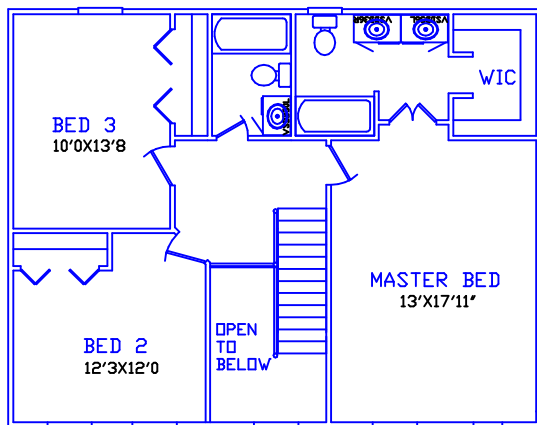


Image Homes Presents The Manchester



1148 SQFT 1ST FLOOR
848 SQFT 2ND FLOOR
71 SQFT OPEN AREA
2067 SQFT TOTAL



For More Information Contact;
IMAGE HOMES (toll free)
1-877-453-3300



**Image
HOMES
Inc.**

Information contained throughout is for illustrative purposes only, and is not intended as part of any legal contract. We reserve the right to modify or change plans, specifications and features.